

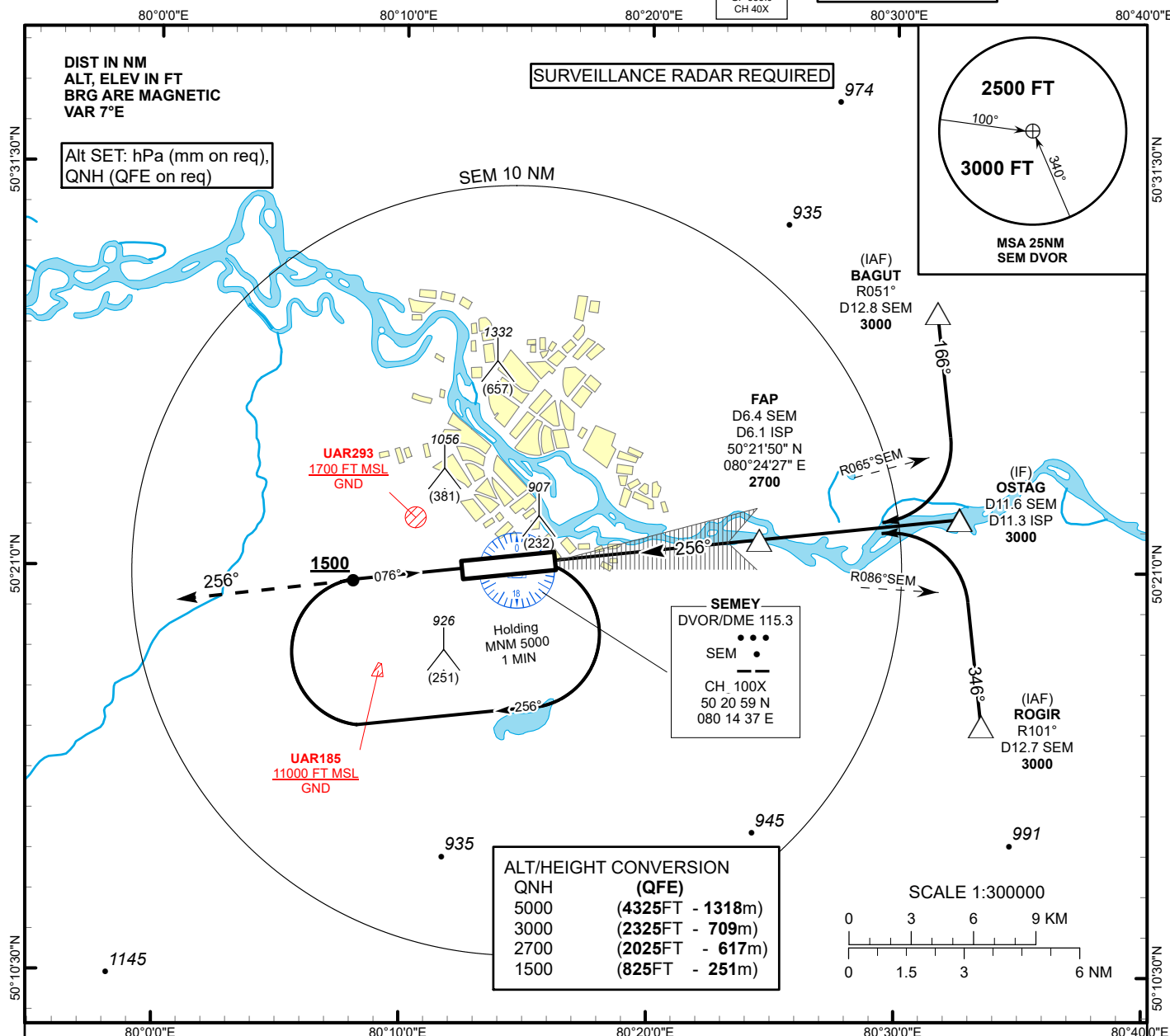
INSTRUMENT
APPROACH
CHART - ICAO

AERODROME ELEV 759 FT
HEIGHTS RELATED TO
DTHR RWY 26 ELEV 675 FT

ILS
LLZ 110.3
ISP
GP 335.0
CH 40X

SEMEY TOWER 128.0
SEMEY ATIS (EN) 118.5
SEMEY ATIS (RU) 122.4

SEMEY
ILS/DME
RWY 26



MISSED APPROACH
Climb on track 256° to 3000.
After passing 1500 radar
vectoring will be provided.
RADIO FAILURE:
In case of RCF climb on track
256° to 2000 or above.
Outbound to D6.0 NM SEM,
turn LEFT to SEM. Climb to 5000,
and join to holding pattern.

TRANSITION ALT
10000

DVOR/DME
SEM

ILS RDH 56

ELEV 675
DTHR RWY 26

FAP
D6.4 SEM
D6.1 ISP
2700

IF
OSTAG
D11.6 SEM
D11.3 ISP
3000

| Aircraft Category | | A | B | C | D | DIST to DTHR DME ISP | NM | 6.1 | 5.0 | 4.0 | 3.0 | 2.0 | 1.0 |
|----------------------------------|-------|----------|----------|----------|----------|-------------------------|----|--------|--------|--------|--------|-------|-------|
| Straight-in Approach OCA/H | | | | | | DME SEM | NM | 6.4 | 5.3 | 4.3 | 3.3 | 2.3 | 1.3 |
| | CAT I | 912(237) | 912(237) | 912(237) | 912(237) | ALTITUDE | FT | 2700 | 2345 | 2018 | 1694 | 1371 | 1050 |
| | | | | | | HEIGHT | FT | (2025) | (1670) | (1343) | (1019) | (696) | (375) |

DME ISP ZERO RANGED TO DTHR RWY 26

| Aerodrome Operating Minima DH ft x RVR(CMV) | CAT I | | | | | GS | Kt | 80 | 100 | 120 | 140 | 160 | 180 |
|---|-------|--|--|--|--|-----------------|--------|-----|-----|-----|-----|-----|-----|
| | | | | | | Desc.Rate(5.2%) | ft/min | 420 | 530 | 640 | 740 | 850 | 950 |

SEMEY (UASS)
ILS/DME RWY26

AERONAUTICAL DATA TABULATION

| ILS approach to RWY26 from OSTAG, BAGUT, ROGIR | |
|--|----------------------------------|
| Fix/point | Coordinates |
| SEM DVOR/DME | 50° 20' 58.7"N 080° 14' 37.5"E |
| (FAP) D6.4 SEM D6.1 ISP | 50° 21' 49.9"N 080° 24' 27.5"E |
| BAGUT (IAF) R051° D12.8 SEM | 50° 27' 44.7"N 080° 31' 38.7"E |
| ROGIR (IAF) R101° D12.7 SEM | 50° 17' 01.1"N 080° 33' 29.5"E |
| OSTAG (IF) D11.6 SEM | 50° 22' 22.9"N 080° 32' 34.2"E |
| DTHR RWY 26 | 50° 21' 10.52"N 080° 15' 00.79"E |
| ISP LLZ | 50° 20' 58.8"N 080° 12' 14.2"E |